

TOWN OF LUMSDEN

BYLAW NO. 16 - 2019

A bylaw to amend Bylaw No. 15-2002, known as the Zoning Bylaw of the Town of Lumsden.

Under the authority granted by clause 46(3)(b) of *The Planning and Development Act, 2007*, SS 2007, c P-13.2, the Town of Lumsden in the Province of Saskatchewan, by and with the advice and consent of the Town of Lumsden Council, enacts amend Bylaw No. 15 - 2002 as follows:

1. THE ZONING DISTRICT MAP - ZONING MAP 1 referred to in Section 5, is amended by rezoning a portion of Block A, Plan No. 75R43504 from RE - Estate Residential District to PS - Public Service District , as shown within the bold dashed line on the Plan of Proposed Subdivision, dated August 14, 2019 by Suresh Rajakumar, S.L.S, Midwest Surveys Inc, which is attached as Schedule "A" and forms a part of this bylaw.
2. This Bylaw shall come into force on the day of adoption by the Town of Lumsden Council.

Readings

Read a first time this

10th day of September, 2019.


Read a second time this

8th day of October, 2019


Read a third time this

8th day of October, 2019





Mayor



Chief Administrative Officer

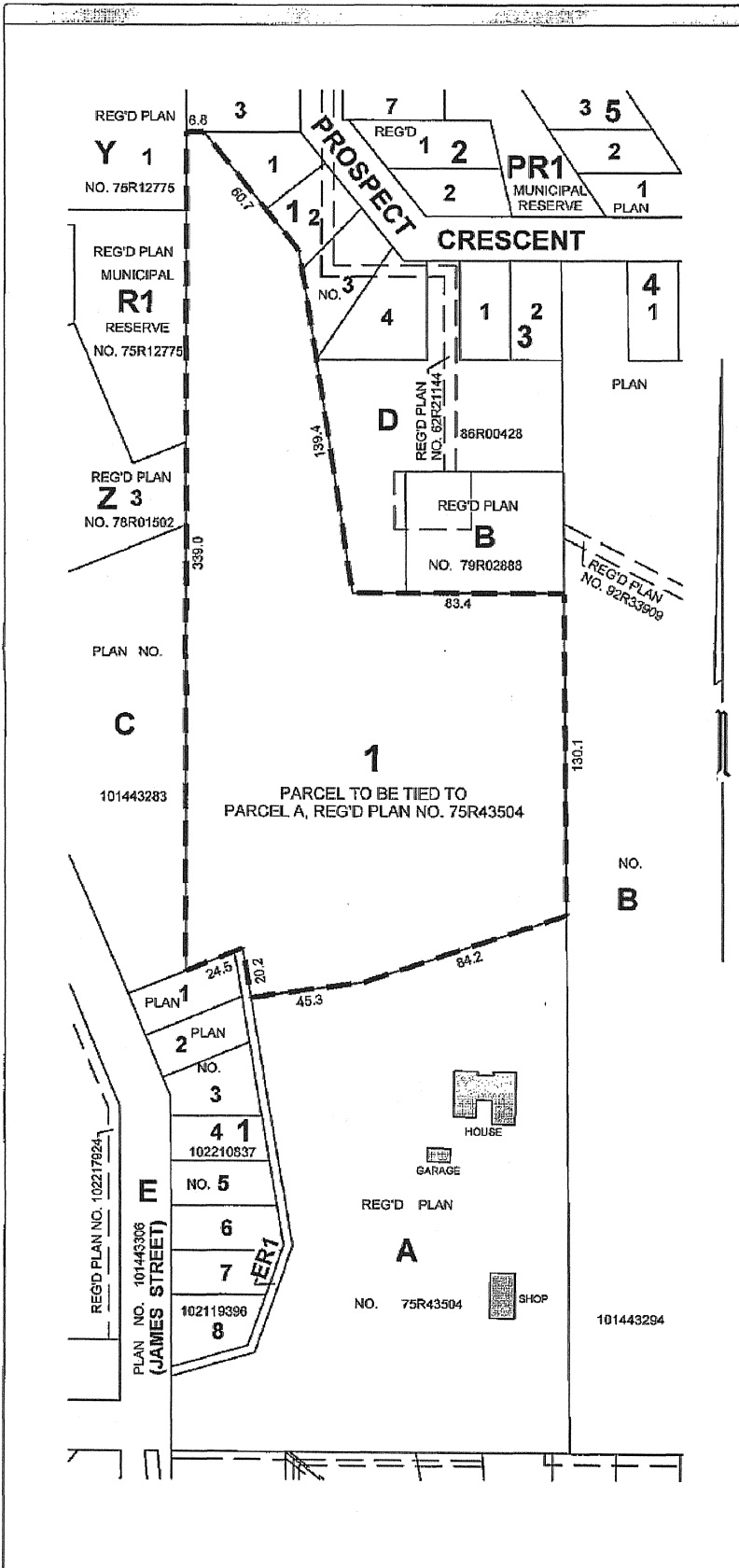
SCHEDULE "A"

PLAN SHOWING

PLAN OF PROPOSED SUBDIVISION
 OF PART OF
BLOCK A, REG'D PLAN No. 75R43504
NW1/4 SEC 28, TWP 19, RGE 21, W2 Mer
LUMSDEN, SASKATCHEWAN
2019
 SCALE = 1: 2000

NOTES

- MEASUREMENTS ARE IN METRES AND DECIMALS THEREOF.
- SOME MEASUREMENTS ARE APPROXIMATE AND MAY DIFFER FROM THE FINAL PLAN OF SURVEY BY AS MUCH AS 5 METRES.
- PORTION TO BE APPROVED IS OUTLINED WITH A BOLD DASHED LINE AND CONTAINS 3.14 ha (7.75 ac)



SURVEYORS CERTIFICATION

Date: August 14/19

S. Reyahn
 Saskatchewan Land Surveyor



LANDOWNER

GREG REIMER

APPROVING AUTHORITY STAMP

CLERK OF THE LOCAL AUTHORITY

(affix seal here)

MIDWEST SURVEYS INC. 405 MAXWELL CRESCENT REGINA, SK S4N 5X9 TEL: 306-522-3801		No. 01 DATE: Mar 21, 2018 REVISION/ISSUED: Plan issued June 10, 2018 Revised south boundary	JOB No.: RC-0209-16 RC-0209-16	PAGE 1 OF 1 1 REVISION
SURVEYED BY: N.A. CALC'D BY: S.R. DRAWN BY: D.J.S.		RC-0209-16-PPS		